



YOU ARE INVITED TO

# JASPER CO CARES COALITION

## 2ND ANNUAL NETWORKING EVENT



9:30 AM Coffee Hour Social/Sign In

10:30 AM Opening & Networking

12:00 PM Stay, Connect, & Support

(Lunch on your own.)



**WEDNESDAY**  
**JULY 8TH**  
**9:30AM-1 PM**

**GRAY MOON**  
**118 N 2<sup>ND</sup> AVE E**  
**NEWTON**

Bring business cards  
& be photo-ready.

RSVP by email:  
[Jaspercocares@jasperia.org](mailto:Jaspercocares@jasperia.org)





U.S. Department of Veterans Affairs

# VA Suicide Prevention Resources for Clinicians, Health Care Professionals, and Educators



## Resources for Clinicians, Health Care Professionals, and Educators



### VA Mental Health Care

VA's repository of mental health resources, information, and data, including materials specifically for women Veterans, LGBTQ+ Veterans, Veterans transitioning from service, and older Veterans.



### Veterans Crisis Line

Available 24/7 to Veterans in crisis and their loved ones. For free, confidential support, Dial 988 then **Press 1**, chat at [VeteransCrisisLine.net/Chat](https://VeteransCrisisLine.net/Chat), or text 838255.



### Emergency Medical Care for Veterans

Veterans having a suicidal crisis can go to any health care facility—at a VA location or in their community—for free emergency health care, including transportation costs, inpatient or crisis residential care for up to 30 days, and outpatient care and social work for up to 90 days.



### Lethal Means Safety Education and Counseling for Providers

This one-hour online course for health care providers serving Veterans in their community offers ACCME, ACCME-NP, ANCC, APA, ASWB, NBCC, and NYSED SWB accreditation.



### VA Suicide Risk Management Consultation Program

Provides free, one-on-one consultations for any community or VA provider who works with Veterans at risk for suicide. The consultation is confidential and can take place by phone or email.



### Older Veteran Behavioral Health Resource Inventory

This inventory provides information on resources to help health and social service professionals support older Veterans who have or are at risk for behavioral health conditions.



### Community Provider Toolkit

This toolkit supports the behavioral health and wellness of Veterans receiving services outside the VA health care system.



### Posttraumatic Stress Disorder (PTSD) Consultation Program

A free, national consultation program for any (non-VA or VA) provider working with a Veteran with signs or a diagnosis of PTSD.



### Toolkit for Therapeutic Risk Management of the Suicidal Patient

This toolkit uses clinical, medical, and legal best practices to inform a model for the assessment and management of suicide risk.



### Toolkit for Providers of Clients with Co-occurring Traumatic Brain Injury (TBI) and Mental Health Symptoms

This toolkit provides mental health clinicians necessary information to address the needs of military personnel and Veterans with a history of TBI and co-occurring mental health conditions.



### Self-Directed Violence Classification System and Clinical Toolkit

This toolkit uses the classification system to track individual risk in patient care settings, implement system-wide suicide prevention strategies, and design clinical research to inform evidence-based practices.



### Provider Self-Care Toolkit

Working with trauma survivors is rewarding, yet such work can create challenges. This toolkit is for providers who work with those exposed to traumatic events, to help reduce the effects of job-related stress, burnout, and secondary traumatic stress.



### Veteran Cultural Competency Training

Transitioning from military to civilian life is a high-risk period for suicide. Bridging the gap between civilians and Veterans is an important step that can assist Veterans as they assimilate into civilian life.



## VA Suicide Prevention Resources for Clinicians, Health Care Professionals, and Educators



### Talking with a Veteran in Crisis

You don't have to be an expert to ask if someone is going through a difficult time or having thoughts of suicide. If you notice changes in a Veteran's behavior or moods and you think they might be in crisis, it's time to respond.



### American Indian (AI) and Alaska Native (AN) Veterans—Community Provider Toolkit

Some understanding of AI/AN cultures helps health care providers provide higher quality care when working with Veteran clients who identify with these cultures. The resources in this toolkit can help professionals ask questions about family, upbringing, languages, and spiritual beliefs to assess the extent to which Veterans identify with AI/AN cultures.



### Clergy Toolkit

Clergy and spiritual communities play an important role in supporting service members and Veterans in their personal well-being and spiritual health. Clergy members often serve as frontline mental health responders.



### Veterans Employment Toolkit

This toolkit helps employers, managers and supervisors, human resources professionals, and employee assistance program (EAP) providers relate to and support their employees who are Veterans and members of the Reserve and National Guard.



### Means Safety Messaging for Clinical Staff

This pocket card provides medical professionals with digestible information on ways to talk with Veteran patients about safe firearm storage.

## Resources for Veterans



### VA S.A.V.E. Training

This online training course, designed in collaboration with PsychArmor, teaches anyone who interacts with Veterans how to recognize warning signs of crisis and what to do to help a Veteran who may be at risk.



### VA Resource Locator

Find VA facilities, Vet Centers, suicide prevention coordinators, and other VA resources.



### Keep It Secure

Promotes awareness about the simple steps Veterans can take to protect themselves and their family, including information about secure gun and medication storage, the warning signs of suicide, and how to find support.



### Don't wait. Reach out.

Use this site to find support and resources designed specifically for Veterans. Family members and friends can also find resources for the Veteran in their life.



### Make the Connection

VA's premier mental health literacy and anti-stigma website highlights Veterans' real, inspiring stories of recovery and connects Veterans and their family members and friends with local resources.



### VA Homeless Programs

If you are or know of a Veteran who is homeless or at imminent risk of homelessness, contact the National Call Center for Homeless Veterans at (877) 4AID-VET (877-424-3838) for assistance.



### Together With Veterans (TWV)

TWV is a community-based suicide prevention program for rural Veterans. TWV involves partnering with rural Veterans and their communities to implement community-based suicide prevention.



### Asian Americans, Native Hawaiians, and Pacific Islanders—Behavioral Health Equity

This website provides national survey reports, agency and federal initiatives, related behavioral health resources, and in-language resources on Asian American, Native Hawaiian, and Pacific Islander populations.



### Uniting for Suicide Postvention

This website provides resources and support for everyone touched by suicide loss.



### Suicide Prevention Resource Center

This website identifies evidence-based programs and best practices for suicide prevention.



## WHAT WE DO

### COMPASSIONATE PEER SUPPORT

When tragedy occurs, no one should have to navigate grief and healing alone.

Our trained peer supporters provide:



Compassionate listening and understanding



Connection with individuals who have lived experience



Guidance through available community resources



Emotional support during the healing process



Referrals to professional and community services



Ongoing encouragement and hope

### WE MEET PEOPLE WHERE THEY ARE

Every journey is unique. We focus on providing support that respects each individual's needs, experiences, and pace of healing.



## COMPASSION TEAM COALITION

*Turning loss into hope*

THROUGH CONNECTION AND CARE

Supporting individuals, families, and communities impacted by **suicide** or **violent crime** throughout **Central Iowa**.



## COMPASSION TEAM COALITION

*Turning loss into hope*

THROUGH CONNECTION AND CARE

*Contact Us*



515-292-9400

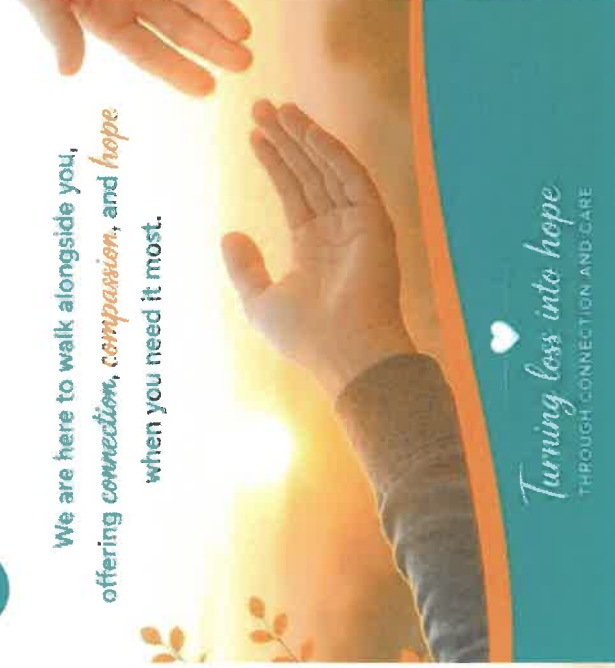


[www.namcentraliowa.org](http://www.namcentraliowa.org)



[rpetersen@namcentraliowa.org](mailto:rpetersen@namcentraliowa.org)

We are here to walk alongside you, offering *connection, compassion, and hope* when you need it most.



*Turning loss into hope*

THROUGH CONNECTION AND CARE



## WHO WE ARE

### OUR MISSION

We are committed to restoring hope to families, loved ones, friends, and community members impacted by **suicide or violent crime**.



## WHO WE SERVE

We support anyone who has been impacted by the loss of a loved one or has been affected by a violent act, including:



Families & Loved Ones



Friends & Peers



Community Members



Schools, Organizations & Community Partners



## BUILDING A STRONGER COMMUNITY



### PUBLIC AWARENESS

Helping our communities recognize the impact of suicide and violent crime while increasing understanding of available support resources.



### EDUCATION

Providing information and training that helps individuals, families, workplaces, schools, and communities respond with compassion and confidence.



### STIGMA REDUCTION

Encouraging open conversations about grief, trauma, mental health, and healing to foster understanding and connection.



### COMMUNITY ENGAGEMENT

Working proactively with community partners, organizations, and residents to create networks of support before and after a crisis occurs.

### MISSION STATEMENT

The Compassion Team Coalition is dedicated to restoring hope to families, loved ones, and communities across Central Iowa who have been affected by **suicide or violent crime**.

We strive to play a small yet vital role by offering compassionate postvention support through our Peer Support Program.

By walking alongside those we serve, we provide meaningful connections and access to resources that meet their unique needs during difficult times.



*Hope does not mean the pain is gone. It means we choose to move forward with support, love, and belief in a better tomorrow.*



# Kid Assist, Inc.



## Board of Directors

Jenny Springer, *President*

Steve Gehling, *Treasurer*

Melissa Strand

April Ament

Connie Beck

Jessica Pottebaum

Kelly Sorenson

Linda Anderson PT, *Director*



**UNITED WAY**  
Jasper County

For more information  
or to donate equipment,  
please call Linda Anderson at:

**641.521.1153**

[wilsand96@yahoo.com](mailto:wilsand96@yahoo.com)

**EQUIPMENT  
LOAN  
PROGRAM**



Adapted swing



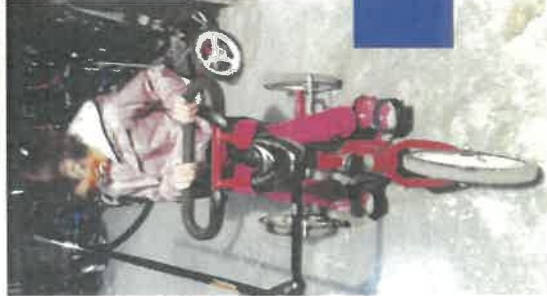
Nathan on platform bike



Side-by-side tandem bike



Shower chair at Newton YMCA



Rifton adapted bike with steering bar



Newton Bike Day

**Kid Assist, Inc.** is a nonprofit, tax-exempt, equipment loan program. Our mission is to enhance the quality of life of children, youth and adults with disabilities in Jasper County by loaning leisure, recreational and other adapted equipment they might not otherwise be able to obtain, in order to learn independent skills and increase their self-sufficiency.

In 2026, **Kid Assist** acquired inventory from the Salvation Army loan closet, which was closed a few years prior. Those items are now available to the community through **Kid Assist**.

This equipment is quite expensive, so donations are greatly appreciated. We also accept donations of equipment that people no longer need.

All equipment is loaned to families free of charge. **Kid Assist** purchases new and used equipment such as lift chairs, walkers, bath and toileting aids, adapted bikes, low tech switches and toys, bedside tables, adapted swim aids, swings and all types of adapted positioning aids for sitting and standing.

For more information about our organization, please contact Linda Anderson at 641-521-1153 or email at [wilsand96@yahoo.com](mailto:wilsand96@yahoo.com)

Thank you

# YOU CAN REPORT CONTROLLED BURNS ON THE APP!

Help keep our community safe and informed.



## EASY TO USE

Submit your Before Burn and Post Burn forms right from your phone.



## STAY COMPLIANT

You must submit a Controlled Burn Request form prior to your burn and a Post Burn form after your burn.

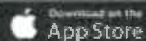


## OTHER OPTIONS

Prefer to report by phone?  
Call 641-792-1547.



DOWNLOAD THE JASPER COUNTY EMA APP TODAY!



9:41

← Controlled Burn

You must submit a Controlled Burn Request form prior to your burn. You must also submit a Post Burn form, after your controlled burn. Please choose the appropriate form from the drop down option below. After your controlled burn, you have the option to submit your form or to report by phone. 641-792-1547

Controlled Burn Type

Please indicate whether this form is being submitted before or after the controlled burn.\*

Before the burn

Controlled Burn

Name\*

Address of the burn, or nearest address\*

Phone Number\*

Time Started\*

Exit Time

Submit



## Iowa Suicide Prevention Coalitions Summit: Risk Factors and Resources

It is with great pleasure that we invite you to the 2026 **Iowa Suicide Prevention Coalitions Summit: Risk Factors and Resources**. This one-day event will be held on Thursday, August 27, 2026, at the Jeff & Deb Hansen Agriculture Student Learning Center on the Iowa State University campus in Ames, Iowa and is presented by the Iowa Suicide Prevention Planning Committee, Iowa State University Extension and Outreach, and several community sponsors highlighted on the summit website.

This year's summit features a theme of suicide risk factors and resources. The day will include keynote speakers and connections to key statewide suicide prevention resources. **CEU Credits will be available for attendees.**

Registration Opening Soon!

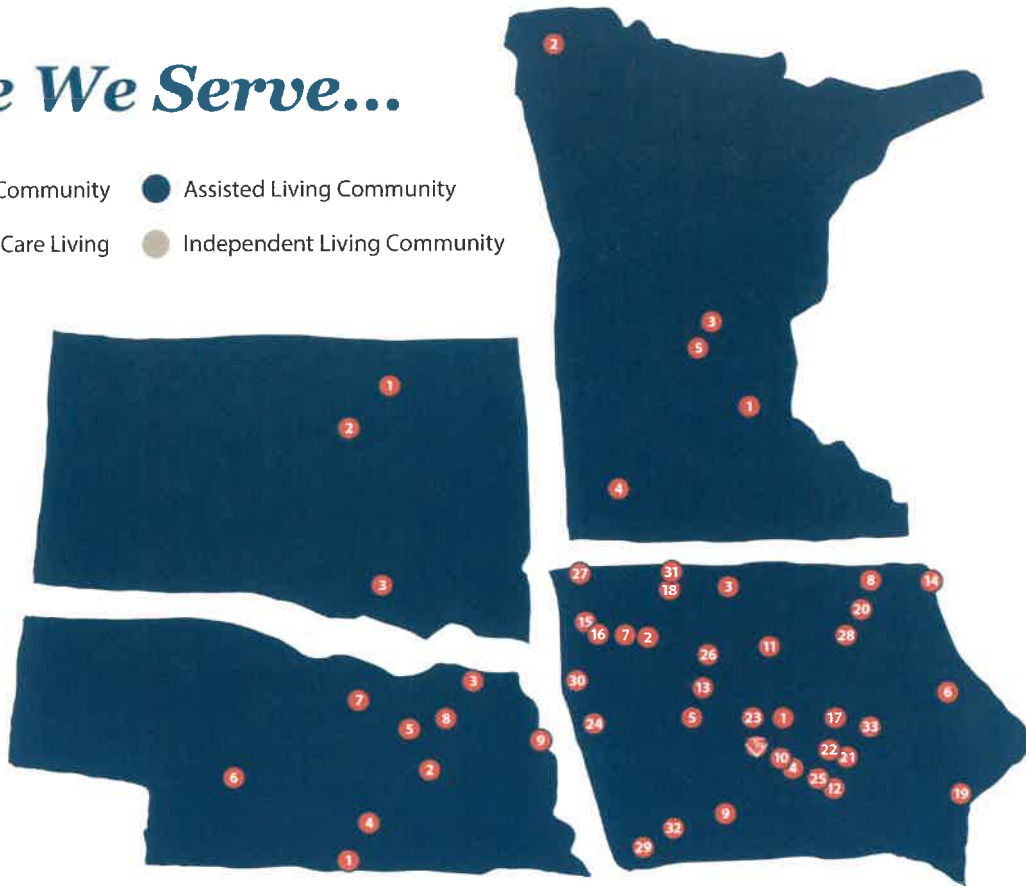
We are now in our fourth year of bringing this summit to life! Our first three gatherings were tremendous successes, and we are excited to offer another inspiring and informative gathering of suicide prevention coalition members from across Iowa. We hope you can join us for what promises to be another invaluable event!

For more information, including links to the agenda and lodging options, go to the summit website at <https://www.regcytes.extension.iastate.edu/prevention/>.

**Contact:** David N. Brown, Ph.D., LMFT, CFLE  
Iowa State University Extension and Outreach  
1314 Palmer, 2222 Osborn Dr., Ames, IA 50011  
Behavioral Health State Specialist  
Email: [dnbrown@iastate.edu](mailto:dnbrown@iastate.edu)  
Phone: 515-294-0860  
[www.extension.iastate.edu/humansciences](http://www.extension.iastate.edu/humansciences)

# Where We Serve...

- Skilled Nursing Community
- Assisted Living Community
- Secure Memory Care Living
- Independent Living Community



## Iowa

- 1 **Ames, IA**  
Accura HealthCare of Ames
- 2 **Aurelia, IA**  
Accura HealthCare of Aurelia
- 3 **Bancroft, IA**  
Accura HealthCare of Bancroft
- 3 Stonebridge Suites of Bancroft
- 4 **Carlisle, IA**  
Accura HealthCare of Carlisle
- 4 Stonebridge Suites of Carlisle
- 5 **Carroll, IA**  
Accura HealthCare of Carroll
- 5 Stonebridge Suites of Carroll
- 6 **Cascade, IA**  
Accura HealthCare of Cascade
- 7 **Cherokee, IA**  
Accura HealthCare of Cherokee
- 7 Stonebridge Suites of Cherokee
- 8 **Cresco, IA**  
Accura HealthCare of Cresco
- 9 **Creston, IA**  
Accura HealthCare of Creston
- 10 **Des Moines, IA**  
Accura HealthCare of S. Des Moines
- 11 **Eagle Grove, IA**  
Rotary Senior Living
- 12 **Knoxville, IA**  
Accura HealthCare of Knoxville
- 13 **Lake City, IA**  
Accura HealthCare of Lake City

- 14 **Lansing, IA**  
Thornton Manor
- 14 Thornton Heights
- 15 **Le Mars, IA**  
Accura HealthCare of Le Mars
- 16 Stonebridge Suites of Le Mars
- 17 **Marshalltown, IA**  
Accura HealthCare of Marshalltown
- 18 **Milford, IA**  
Accura HealthCare of Milford
- 18 Stonebridge Suites of Milford
- 19 **Muscatine, IA**  
Accura HealthCare of Muscatine
- 19 Stonebridge Suites of Muscatine
- 20 **New Hampton, IA**  
Accura HealthCare of New Hampton
- 21 **Newton, IA**  
Accura HealthCare of Newton
- 22 Traditions Memory Care of Newton
- 23 **Ogden, IA**  
Accura HealthCare of Ogden
- 24 **Onawa, IA**  
Accura HealthCare of Onawa
- 24 Stonebridge Suites of Onawa
- 25 **Pleasantville, IA**  
Accura HealthCare of Pleasantville
- 26 **Pomeroy, IA**  
Accura HealthCare of Pomeroy
- 26 Stonebridge Suites of Pomeroy
- 27 **Rock Rapids, IA**  
Stonebridge Suites of Rock Rapids

- 28 **Shell Rock, IA**  
Shell Rock Senior Living
- 28 The Meadows of Shell Rock
- 29 **Shenandoah, IA**  
Accura HealthCare of Shenandoah
- 30 **Sioux City, IA**  
Accura HealthCare of Sioux City
- 31 **Spirit Lake, IA**  
Accura HealthCare of Spirit Lake
- 32 **Stanton, IA**  
Accura HealthCare of Stanton
- 33 **Toledo, IA**  
Accura HealthCare of Toledo
- 33 **West Des Moines, IA**  
Accura HealthCare Resource Center

## Minnesota

- 1 **Inver Grove Heights, MN**  
Woodlyn Heights Senior Living
- 2 **Karlstad, MN**  
Karlstad Senior Living
- 2 The Meadows of Karlstad
- 3 **Sauk Rapids, MN**  
Ridgeview Place Senior Living
- 4 **Tracy, MN**  
Prairie View Senior Living
- 5 **Waite Park, MN**  
Sterling Park Senior Living
- 5 Sterling Park Assisted & Independent Living

## South Dakota

- 1 **Aberdeen, SD**  
Aberdeen Health & Rehab
- 2 **Faulkton, SD**  
Faulkton Senior Living
- 2 The Meadows of Faulkton
- 3 **Lake Andes, SD**  
Lake Andes Senior Living

## Nebraska

- 1 **Franklin, NE**  
Accura HealthCare of Franklin
- 1 Stonebridge Suites of Franklin
- 2 **Fullerton, NE**  
Accura HealthCare of Fullerton
- 3 **Hartington, NE**  
Accura HealthCare of Hartington
- 3 Stonebridge Suites of Hartington
- 4 **Kenesaw, NE**  
Accura HealthCare of Kenesaw
- 5 **Neligh, NE**  
Accura HealthCare of Neligh
- 6 **North Platte, NE**  
Accura HealthCare of North Platte
- 6 Stonebridge Suites of North Platte
- 7 **O'Neill, NE**  
Accura HealthCare of O'Neill
- 8 **Pierce, NE**  
Accura HealthCare of Pierce



# Hands That Help, Inc.

#501(c)(3) NONPROFIT ORGANIZATION

Serving Poweshiek County

Free Clothing Closet for Those in Need



Helping Our  
Community with



Clothing



Shoes



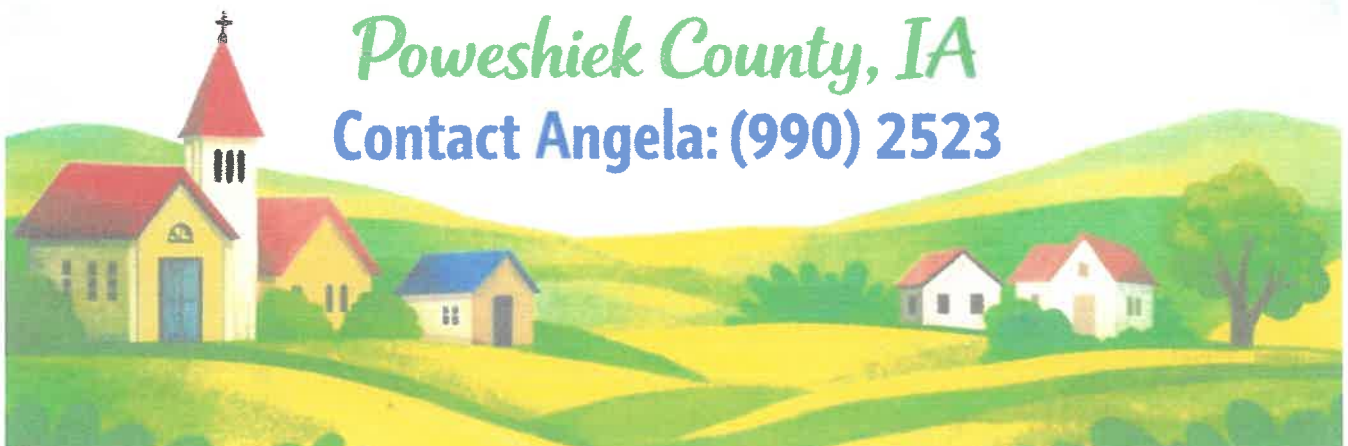
Warmth  
& Care

Everyone Welcome

No ID Required • No Questions Asked

Poweshiek County, IA

Contact Angela: (990) 2523





# Behavioral Health System Navigation

**System Navigation** is a non-crisis, but time-sensitive response service that helps individuals and those supporting them — their family members, caregivers, professionals, and community members — understand, access, and connect with behavioral health supports and services across Iowa.

Behavioral Health System Navigation does not provide clinical assessment, treatment, medication prescriptions or counseling services. Instead, it helps people better understand their options and get connected to what they need.

Support is provided by System Navigators – trained and experienced peer support specialists, community health workers and behavioral health professionals. They bridge barriers to care by connecting community partners, health care professionals and the individuals they serve with:

- Confidential support.
- Information and education.
- Referrals to mental health and substance use providers.
- Assistance in finding psychiatric beds, if needed.

## Who can benefit from System Navigation services?

- **Individuals who seek services for themselves.**
- **Partnering providers**, such as disability access points (DAPs), social workers, law enforcement, correctional facilities, health care providers, crisis service workers, educators and schools, and others who seek assistance for people they serve.
- **Family members, caregivers, or friends** who seek services for a loved one. *(Adults or guardians must request this service on behalf of a child or adolescent.)*

## Behavioral Health System Navigation connects Iowans to services that address:

- Mental health concerns.
- Substance use disorders and recovery services.
- Gambling concerns.
- Addictive disorders

System Navigation addresses financial, housing, social or employment concerns. The service also ensures access to support for rural Iowans and populations with limited access to healthcare.

## Who is eligible and how much does it cost?

System Navigation services are **free of charge**. There are no insurance requirements.

**Community Partners can contact System Navigators directly. Call (515) 505-8988.**

*(continued)*

# How do Community Partners and Providers access Behavioral Health System Navigation?

**Community Partners and Providers can call (515) 505-8988 to coordinate directly with Iowa Primary Care Association's Behavioral Health System Navigators.**

**Iowans seeking assistance can call Your Life Iowa at 855-581-8111.**

Iowans seeking assistance will be connected with a System Navigator via warm hand-off during business hours.

**Monday-Friday, 8 a.m.-4:30 p.m.**

All calls will be returned within 24 business hours.

All callers will be connected with a System Navigator within one business day. *Immediate crises or medical emergencies should be directed to 911 or 988 (the National Suicide Prevention & Crisis Lifeline).*

Community Partners and/or the people they serve can meet with a System Navigator via a phone call or through online support. *Community Partners will be notified when in-person System Navigation services are available.*

The System Navigator will help all participants explore options and overcome barriers to care. They can also help find beds for individuals who need inpatient psychiatric care or community-based crisis care.

Throughout the process, the System Navigator will offer support and connection, providing “warm hand-offs” to providers and services.

You may continue to reach out to your System Navigator as needed, and they will follow up to ensure individuals received the support they needed.



## Physical Signs of Elder Abuse



Dehydration  
or unusual  
weight loss



Missing  
daily living  
aids



Unexplained  
injuries, bruises,  
cuts, or sores



Unsanitary living  
conditions and  
poor hygiene



Unattended  
medical  
needs

To learn more, visit [ncea.acl.gov](http://ncea.acl.gov)

## Emotional/Behavioral Signs of Elder Abuse



Increased fear  
or anxiety



Isolation from  
friends or family



Unusual changes  
in behavior or sleep



Withdrawal from  
normal activities

To learn more, visit [ncea.acl.gov](http://ncea.acl.gov)

## Financial Signs of Elder Abuse



Fraudulent signatures  
on financial documents



Unpaid bills



Unusual or sudden changes  
in spending patterns, will, or  
other financial documents

To learn more, visit [ncea.acl.gov](http://ncea.acl.gov)

## Jasper County Cares Coalition Meeting Sign In Sheet 6/10/2026

X	Name	Email	Organization
	Ace Krupa	<a href="mailto:ace.stonehocker@agingresources.com">ace.stonehocker@agingresources.com</a>	Aging Resources
	Adam Reiter	<a href="mailto:areiter@wesleylife.org">areiter@wesleylife.org</a>	WesleyLife Hospice and Palliative Care
X	Aimee Spores	<a href="mailto:aspores@wesleylife.org">aspores@wesleylife.org</a>	WesleyLife Hospice and Palliative Care
	Alexis Thompson	<a href="mailto:Alexis.Thompson@SGIPRecoveryCenter.com">Alexis.Thompson@SGIPRecoveryCenter.com</a>	St. Gregory Recovery Center
	Allie del Rio	<a href="mailto:Alejandra.delrio@polkcountiyoma.gov">Alejandra.delrio@polkcountiyoma.gov</a>	Ribbons of Hope/Polk County Health Dept.
	Allison Graham	<a href="mailto:grahama@newtoncsd.org">grahama@newtoncsd.org</a>	Berg Middle School
X	Alondra Sanchez	<a href="mailto:alondra.sanchez@micaonline.org">alondra.sanchez@micaonline.org</a>	MICA
	Alyssa Plunkett	<a href="mailto:a.a.kielly@gmail.com">a.a.kielly@gmail.com</a>	LISW
	Amanda Scalise	<a href="mailto:ascalise@impactcap.org">ascalise@impactcap.org</a>	IMPACT
	Amber Tompkins	<a href="mailto:atompkins@centraliowashelter.org">atompkins@centraliowashelter.org</a>	Central Iowa Shelter and Services
	Amy Blanchard	<a href="mailto:amy@greaterpcf.org">amy@greaterpcf.org</a>	JMP ECI
	Amy Smith	<a href="mailto:amyllynnsmith1984@outlook.com">amyllynnsmith1984@outlook.com</a>	Monarch Counseling Services
	Andi Borsch	<a href="mailto:andi.borsch@hhs.iowa.gov">andi.borsch@hhs.iowa.gov</a>	Department of Human Services IHHS, Newton
X	Andy Algreen	<a href="mailto:andy@algreenlegacy.com">andy@algreenlegacy.com</a>	Algreen Legacy Group
X	Angela Barnell	<a href="mailto:angelab@cfiowa.org">angelab@cfiowa.org</a>	Parent Partners
	Angela Busick	<a href="mailto:angela.busick@iowa.gov">angela.busick@iowa.gov</a>	Iowa, Probation/Parole - IDOC
	Angelica Leguizamo	<a href="mailto:angelica.leguizamo@polkcountyiowa.gov">angelica.leguizamo@polkcountyiowa.gov</a>	Ribbons of Hope/Polk County Health Dept.
	Angie Van Winkle	<a href="mailto:avwinkle@yss.org">avwinkle@yss.org</a>	Ember
	Angie Wells	<a href="mailto:angiew@capstonebh.com">angiew@capstonebh.com</a>	Capstone Behavioral Health
X	Araceli Roberts	<a href="mailto:araceli.roberts@micaonline.org">araceli.roberts@micaonline.org</a>	Mid Iowa Community Action Agency MICA
	Ashley Rosenberg	<a href="mailto:Ashley.Rosenberg@accura.healthcare">Ashley.Rosenberg@accura.healthcare</a>	Accura HealthCare
	Aster Frommelt	<a href="mailto:afrommelt@yss.org">afrommelt@yss.org</a>	YSS Prep
	Austin Gross	<a href="mailto:agross@rosecranceorg">agross@rosecranceorg</a>	Rosecrance Behavioral Health, Residential
	Ava Neppi	<a href="mailto:aneppi@efr.org">aneppi@efr.org</a>	EFR
	Barb Ranck	<a href="mailto:branck@efr.org">branck@efr.org</a>	EFR
X	Becca Decker	<a href="mailto:rdecker@gdmhabitat.org">rdecker@gdmhabitat.org</a>	Habitat for Humanity, Greater of Des Moines
X	Becky Pryor	<a href="mailto:bpryor@jasperia.org">bpryor@jasperia.org</a>	Jasper County Health Dept
X	Beila Flickinger	<a href="mailto:beilaf@capstonebh.com">beilaf@capstonebh.com</a>	Capstone Behavioral Health
	Beth Andrew	<a href="mailto:bandrew@quakerdale.org">bandrew@quakerdale.org</a>	Quakerdale Family Services
	Betsy Stursma	<a href="mailto:betsy.stursma@iowapca.org">betsy.stursma@iowapca.org</a>	Iowa Primary Care
X	Bill Ehler	<a href="mailto:pehler@aol.com">pehler@aol.com</a>	NAMI Central Iowa volunteer
X	Blake Hollibaugh	<a href="mailto:hollibla15@gmail.com">hollibla15@gmail.com</a>	Mentoring with Becky Pryor
	Breanna Elliott	<a href="mailto:Breanna.Elliott@phnxhouse.com">Breanna.Elliott@phnxhouse.com</a>	Phoenix House- Newton
	Breeanna Olmstead	<a href="mailto:breeanna.olmstead@mv.mchs.edu">breeanna.olmstead@mv.mchs.edu</a>	Parent Partners
	Brendan Johnson	<a href="mailto:bjohnson@immanuel.com">bjohnson@immanuel.com</a>	Immanuel Pathways
	Brett Michael	<a href="mailto:brett.michael@polkcountyiowa.gov">brett.michael@polkcountyiowa.gov</a>	Jasper County Mental Health Advocate
	Brooker Holder	<a href="mailto:brooke.holder@unitypoint.org">brooke.holder@unitypoint.org</a>	Grinnell, Unity Point
	Bruce Showalter	<a href="mailto:nhdcdirector@gmail.com">nhdcdirector@gmail.com</a>	Newton Housing Development
	Caroline Noble	<a href="mailto:cnoble@efr.org">cnoble@efr.org</a>	EFR
	Cathy Drost	<a href="mailto:cdrost@iastate.edu">cdrost@iastate.edu</a>	ISU Extension Health and Human Services
	Chelsie Dirksen	<a href="mailto:vallyvistaDON@vvhrehab.com">vallyvistaDON@vvhrehab.com</a>	Valley Vista Nursing and Rehab
	Chelsie Kendall	<a href="mailto:Chelsie.Kendall@progressindustries.org">Chelsie.Kendall@progressindustries.org</a>	Progress Industries
	Cher Harris	<a href="mailto:Cher.Harris@usc.salvationarmy.org">Cher.Harris@usc.salvationarmy.org</a>	Salvation Army
	Chloie Rosenbalm	<a href="mailto:Chloie.Rosenbalm@homeinstead.com">Chloie.Rosenbalm@homeinstead.com</a>	Home Instead
	Chris Baunschweig	<a href="mailto:cbraunschweig@newtondailynews.com">cbraunschweig@newtondailynews.com</a>	Newton Daily News
	Chris Clark	<a href="mailto:cclark@optimaelifeservices.com">cclark@optimaelifeservices.com</a>	Optimae Life Services
	Christine Dawson	<a href="mailto:dawsonc@newton.k12.ia.us">dawsonc@newton.k12.ia.us</a>	Newton Schools
	Cindy Clark	<a href="mailto:cclark@pellahealth.org">cclark@pellahealth.org</a>	Pella Regional Sully Clinic
	Cindy Rybolt	<a href="mailto:crybolt@iowalaw.org">crybolt@iowalaw.org</a>	Iowa Legal Aid

new

Seeking job opportunities

	CJ Oldfield	<a href="mailto:oldfieldc@newtonclinic.com">oldfieldc@newtonclinic.com</a>	Newton Clinic
X	Cody Daugherty	<a href="mailto:cody@theway146.com">cody@theway146.com</a>	The Way
	Cody Miller	<a href="mailto:cmiller@efr.org">cmiller@efr.org</a>	EFR
X	Connie McQuiston	<a href="mailto:cmcquiston@jasperia.org">cmcquiston@jasperia.org</a>	Jasper County General Assistance
	Connie Thomsen	<a href="mailto:connie.thomsen@micaonline.org">connie.thomsen@micaonline.org</a>	MICA- Weatherization
	Cookie Fuzell	<a href="mailto:Cookie.Fuzell@newtonymca.org">Cookie.Fuzell@newtonymca.org</a>	Newton YMCA
	Courtney Dewey-	<a href="mailto:courtneyo@heartandsolutions.net">courtneyo@heartandsolutions.net</a>	Heart and Solutions
	Craig Armstrong	<a href="mailto:craigarmstrong529@gmail.com">craigarmstrong529@gmail.com</a>	Lutheran Church of Hope
	Dallas Vander Pol	<a href="mailto:dvanderpol@newtonchristianschool.com">dvanderpol@newtonchristianschool.com</a>	Newton Christian School
	Danielle Kensworthy	<a href="mailto:danielle@shortyears.org">danielle@shortyears.org</a>	Short Years Program, PAT
	Danny Schnathorst	<a href="mailto:DSchnathorst@ridehirta.com">DSchnathorst@ridehirta.com</a>	HIRTA
	Darcy Baughman	<a href="mailto:darcy.baughman@drake.edu">darcy.baughman@drake.edu</a>	Drake University Head Start
	Darnell Loatman	<a href="mailto:darnell.loatman@focussinc.org">darnell.loatman@focussinc.org</a>	FOCUSS
	Dave Wood	<a href="mailto:dwood@heartlandaea.org">dwood@heartlandaea.org</a>	Heartland AEA Regional Director
	Daveena Surber	<a href="mailto:dsurber87@gmail.com">dsurber87@gmail.com</a>	Parent Partners
	Deana Van Brocklin	<a href="mailto:Deana.VanBrocklin@dallascountyiowa.gov">Deana.VanBrocklin@dallascountyiowa.gov</a>	Iowa Courts, Juvenile Court
	Deb Ferrone	<a href="mailto:deb.ferrone@gmail.com">deb.ferrone@gmail.com</a>	retired social worker
	Denise Doucette	<a href="mailto:denised@capstonebh.com">denised@capstonebh.com</a>	Capstone Behavioral Health
	Devin Robertson	<a href="mailto:qdevin79@gmail.com">qdevin79@gmail.com</a>	FOCUSS
	Emily Easton	<a href="mailto:eeaston@fouroaks.org">eeaston@fouroaks.org</a>	Four Oaks
	Emily Hansen	<a href="mailto:emily@iabehavioral.com">emily@iabehavioral.com</a>	Iowa Behavioral Associates
X	Emmaline Krapfl	<a href="mailto:Emmaline.Krapfl@lung.org">Emmaline.Krapfl@lung.org</a>	American Lung of Iowa
	Erin Lepird	<a href="mailto:elepird@heartlandaea.org">elepird@heartlandaea.org</a>	Heartland AEA Regional Director
	Erin Ouverson	<a href="mailto:erin.ouverson@micaonline.org">erin.ouverson@micaonline.org</a>	Mid Iowa Community Action Agency MICA
	Felicia Hazelton	<a href="mailto:felicia@shortyears.org">felicia@shortyears.org</a>	Short Years Program, PAT
	Gary Martin	<a href="mailto:gememartin1970@gmail.com">gememartin1970@gmail.com</a>	Friends in Hope
	George Sorensen	<a href="mailto:George.Sorensen@newtonymca.org">George.Sorensen@newtonymca.org</a>	Newton YMCA
	Heather Vander Beek	<a href="mailto:hvanderbeek@heartlandaea.org">hvanderbeek@heartlandaea.org</a>	Heartland AEA
	Hezekiah Applegate	<a href="mailto:happlegate@pcmschools.org">happlegate@pcmschools.org</a>	PCM Schools
	Jacque Spriggs	<a href="mailto:j.spriggs@hickoryrecovery.com">j.spriggs@hickoryrecovery.com</a>	Hickory Recovery
X	Jaime Paca	<a href="mailto:jaime.paca@uhsinc.com">jaime.paca@uhsinc.com</a>	Clive Behavioral Health
X	Jana Larsen	<a href="mailto:jana.larsen@micaonline.org">jana.larsen@micaonline.org</a>	Mid Iowa Community Action Agency MICA
	Jeff Alger	<a href="mailto:icc@gmail.com">icc@gmail.com</a>	Innovative Counseling and Consulting Inc
X	Jeff Holschuh	<a href="mailto:jholschuh@acu.iowa.org">jholschuh@acu.iowa.org</a>	Advantage Credit Union
X	Jeff Graney	<a href="mailto:jgraney@iastate.edu">jgraney@iastate.edu</a>	ISU Extension
new	Jenatta Hines	<a href="mailto:jenatta.hines@iowapca.org">jenatta.hines@iowapca.org</a>	Iowa Primary Care
	Jen Gustafson	<a href="mailto:jen.gustafson@hhs.iowa.gov">jen.gustafson@hhs.iowa.gov</a>	CASA of Iowa
	Jenn Tielbur	<a href="mailto:jennt@teamcsa.org">jennt@teamcsa.org</a>	Team CSA-Community Support Advocates
	Jennifer Lackamp	<a href="mailto:jenniferl@thewell-iowa.org">jenniferl@thewell-iowa.org</a>	The Well, Newton
	Jennifer O'Halloran	<a href="mailto:ohalloran@lshawks.com">ohalloran@lshawks.com</a>	Lynnville-Sully School
X	Jessica Miller	<a href="mailto:jessica.miller@micaonline.org">jessica.miller@micaonline.org</a>	Mid Iowa Community Action Agency MICA
	Jessica Swank	<a href="mailto:jswank@stcroixhospice.com">jswank@stcroixhospice.com</a>	St. Croix Hospice
	Jessie Manatrey	<a href="mailto:clinicalliaison@vvrehab.com">clinicalliaison@vvrehab.com</a>	Valley Vista for Nursing and Rehabilitation
	Jill Halter	<a href="mailto:jhalter@baxter.k12.ia.us">jhalter@baxter.k12.ia.us</a>	Baxter Schools
	Jill Rogers	<a href="mailto:jrogers@centraliowashelter.org">jrogers@centraliowashelter.org</a>	Central Iowa Shelter and Services
	Jodi Blackford	<a href="mailto:jodib@stopdvsa.org">jodib@stopdvsa.org</a>	Crisis Intervention Services
	Joe McQueery	<a href="mailto:jmcquerry@efr.org">jmcquerry@efr.org</a>	EFR- Employee and Family Resources
	Jordan Reynolds	<a href="mailto:jreynoldsicc@gmail.com">jreynoldsicc@gmail.com</a>	Innovative Counseling and Consulting Inc
	Jocelin Reyes	<a href="mailto:jocelin.reyes@iowapca.org">jocelin.reyes@iowapca.org</a>	Iowa PCA
X	Josalyn Vander Molen	<a href="mailto:josalyn.vandermolen@agingresources.com">josalyn.vandermolen@agingresources.com</a>	Aging Resources
	Josh Britton & Johnny	<a href="mailto:jbritton@jaspersheriff.org">jbritton@jaspersheriff.org</a>	Jasper County Sheriff's Office/ Baxter SRO
	Josh Stafford	<a href="mailto:josh.stafford@progressindustries.org">josh.stafford@progressindustries.org</a>	PI

new

Holly merk-wilcox

Accura

	Judy Monroe	professorjudy1@gmail.com	Neighbors Helping Neighbors
	Julie Britton	julieb@newtongov.org	Newton Police Department
	Julie Gibbons	Julie.Gibbons@polkcountyiowa.gov	Polk County Behavioral Health
X	Julie Smith	julies@capstonebh.com	Capstone Behavioral Health
	Kaleb Stevens	kstevens@blueprintiowa.org	Blueprint to Home Ownership
	Kara Dirksen	kbdirksen@dmacc.edu	DMACC- Des Moines Area Community College, Newton
	Kara Hernandez	Kara.Hernandez@linncountyiowa.gov	Decat and CPPC
	Karen Kriz		Former Skiff Employee/Church
	Karen Vanderhoff	Karen@AIMlifesolutions.com	AIM Life Services
	Kathy Dooley	kathy.dooley@hhs.iowa.gov	Iowa Department of Public Health IHHS
X	Kathy Ellis	kellis@jasperema-hls.org	Jasper County EMA Emergency Management Agency
	Katie Finch	katief@capstonebh.com	Capstone Behavioral Health
X	Keith Isley	keith.isley@progressindustries.org	Progress Industries
X	Kelli Van Manen	kvanmanen@jasperia.org	Jasper County Senior Nutrition
	Kelly Sorenson	sorensonk@newtoncsd.org	Newton Schools
X	Ken Odland	kodland@att.net	Lutheran Church Of Hope
X	Kendi McCollum	kendi.mccollum@mercyone.org	House of Mercy, MercyOne, Newton
	Keri Powers	keri@thrivenowrc.com	Thrive Now Recovery Center
	Keri Schippers	keri.schippers@mercyoneiowa.org	Mercy One Newton Medical Center
	Kevin Schnoebelen	kevin.schnoebelen@hhs.iowa.gov	CASA of Iowa
	Kira Lazenby, Sgt	klazenby@jasperia.org	Jasper County Sheriff's Office,
	Kris Reicks	kreicks@optimaelifeservices.com	Optimae
	Kristen Souza	ksouza@pcmschools.org	PCM High School
	Kristin Fantazia	kristinf@stopdvsa.org	Crisis Intervention Services
X	Kristina Burma	kristina.burma@micaonline.org	MICA I-smile
X	Kristina Winfield	kwinfield@jasperia.org	Jasper County Health Dept
	Kurt Hoover	pastorkurt@yahoo.com	First Luthern Church
	Kya Stilwell	kstilwell@efr.org	EFR
	Kyle Fueston	kylef@thewelliowa.org	The Well, Newton
	Kyle Lovan	lovank@newton.k12.ia.us	Newton High School SRO, Newton PD
	Larrisa Van Donselaar	larissav@thewelliowa.org	The Well, Pella
X	Larry Anderson	wilsand95@yahoo.com	First Presbyterian Church
	Lauren Asman	lasman@efr.org	EFR- Employee and Family Resources
X	Lauren Pendroy	lauren.pendroy@mercyoneiowa.org	Mercy One Newton Medical Center
	Leah Bauman	lbauman@orchardplace.org	Child Care Resource and Referral
	Lee Cochran	leecochran59@gmail.com	Jasper County Hunger Relief
X	Linda Anderson	wilsand96@yahoo.com	Kid Assist
	Lindsey Phillips	lphillips@fouroaks.org	Four Oaks
	Lindsay Porter	lporter@orchardplace.org	Orchard Place
	Lori Eekhoff	leekhoff@heartlandaea.org	Heartland AEA
X	Lori Reynolds	lori.reynolds@va.gov	State of Iowa VA
	Lucas Ingle	lucas@aimlifesolutions.com	AIM Life Solutions
	Luke Skinner	Luke.Skinner@accura.healthcare	Accura, Traditions Memory Care
	Madison Ellis and Piper	madisone@capstonebh.org	Capstone Behavioral Health
	Mariah Fox	admin@vvrehab.com	Valley Vista for Nursing and Rehabilitation
	Mark Feilmann	mgfeilmann96@gmail.com	Newton Optimist
	Mark Thayer	mark@newtonclinic.com	Newton Clinic
	Mayra Garcia	mayra.garcia@micaonline.org	Mid Iowa Community Action Agency MICA
	Megan Davidson	mdavidson@orchardplace.org	CCR&R
	Megan Garrett	megan.garrett@iowacourts.gov	Iowa Courts
	Megan Thompson	megan.thompson@micaonline.org	Mid Iowa Community Action Agency MICA
X	Megan Van Beek	megan.vanbeek@micaonline.org	Mid Iowa Community Action Agency MICA

	Meggan Baird	m.baird145@gmail.com	Hy-Vee Newton
	Melissa Dalton	melissad@newtongov.org	City of Newton, Council
X	Melissa Gary	mgary@jasperia.org	Jasper County Health Dept
	Mercedes See	mlsee@optimaelifeservices.com	Optimae
	Michael Metts Dr. (Mike)	michael.metts@mercyone.org	Mercy One Newton - Pediatrician
	Michaela Gunsaulus	gunsaulus@lshawks.com	Lynnville-Sully Elementary School Counselor
	Michelle White	michelle.white@agingresources.com	Aging Resources of Central Iowa
	Mikieya Garcia	mikieya.garcia@accura.healthcare	Accura East
	Miranda Caldwell	Miranda.Caldwell@cassialife.org	Newton Village
	Miranda Lopez	miranda@keystosuccesspella.com	Keys to Success
	Morgan Burford	morganb@stopdvs.org	Crisis Intervention Services
	Nicholas Pietrack	npietrack@jaspercoatty.org	Jasper County Attorney's Office
	Nikki Stout	Nikki.Stout@quickvisituc.com	Quick Visit Urgent Care
	Patrick Mullen	pmullen@suncrestcare.com	Suncrest Hospice
	Paul Millhollin	pastor1stpresnewton@outlook.com	First Presbyterian Church
	Peg Ehler	pehler@aol.com	Jasper County Hunger Relief packaging St Lukes
	Penelope Neal	pjadeneal@gmail.com	YMCA
	Phyllis Peter	phyllisp@newtongov.org	Newton Public Library
	Rachel Lazenby	rachell@capstonebh.org	Capstone Behavioral Health
	Raichel Burnett	rburnett@efr.org	EFR Employee and Family Resources
X	Randy Ervin	RandyE@newtongov.org	City of Newton
	Ray Maxey	rmaxey@jasperia.org	Jasper County Veterans Office
	Rebecca Becky Peterson	RPeterson@mercydesmoines.org	House of Mercy, MercyOne, Newton
	Rebecca McRae	Rebecca.McRae@phnxhouse.com	Phoenix House
X	Rita Baker	director@pccioowa.com	Pregnancy Center of Central Iowa
	Rob Burdess- Chief	RobB@newtongov.org	Newton Police Department
	Robert "Robbie"	Robbie@discoverhope517.com	Discover Hope 517
	Roxanne Petersen	RPetersen@namicentraliowa.org	NAMI Central Iowa
	Sam Carrell	scarrell@centraliowashelter.org	CISS
	Sam Vazquez	svazquezicc@gmail.com	ICC BEHS program
	Sara Van Wyk	svanwyk@pellahealth.org	Pella Regional, Sully Clinic
X	Sarah Patterson	patter@iastate.edu	RSVP (Senior Volunteer Program)
	Sarah Urias	sarahu@capstonebh.com	Capstone Behavioral Health
	Scott Pritchard	scott.pritchard@clearviewrecoveryinc.org	Clearview Recovery
	Serenity Bookout	serenity.bookout@newtonymca.org	Newton YMCA Childcare Director
	Shannon	shannon@discoverhope517.com	Discover Hope 517
X	Shawn Kinnison	s.kinnison@hickoryrecovery.com	Hickory Recovery Network
	Sheila Henrichsen	sheila.henrichsen@agingresources.com	Aging Resources of Central Iowa
	Shelley Koons	shelleyk@ottumwacrisiscenter.org	Family Crisis Center
	Sierra Stevens	sierra.stevens@micaonline.org	Mid Iowa Community Action Agency MICA
	Stacey Miller	smiller@wesleylife.org	Wesley Life
	Stephanie Appleby	Stephanie.Appleby@polkcountyiowa.gov	Polk County Health Department
	Terra Cleveland	terra.cleveland@iowapca.org	Iowa Primary Health Care
	Terra Oaks	TerraO@stopdvs.org	Crisis Intervention Services
	Tess De Bartolo	tess.debartolo@hhs.iowa.gov	IHHS STI program
	Tim Burns	Revtimothyb@gmail.com	Volunteer, Least of Saints Ministry

	Tim North	tim.north@usc.salvationarmy.org	Salvation Army Newton
	Tim Salmon	tsalmon@colfaxmingo.org	Colfax Mingo Schools
	Todd (TJ) Decker & Delta	tdecker@jaspersheriff.org	Jasper County Sheriff's Office/ LS SRO
	Tom Troxell	tomtroxell61@gmail.com	Fellowship with Faith Ministry, Homeless outreach
X	Tracie Backstrom	tracie@shortyears.org	Short Years Parents as Teachers
	Tyler Brecht	parentpartnerstyler@gmail.com	Parent Partners

40 in attendance